



INDIAN SCHOOL DARSAIT  
TERM II - MARCH 2018  
SAMPLE PAPER  
ENVIRONMENTAL STUDIES



Class: V Sec: ....

Date: .....

Name: .....

Max.Marks:50

Time: 2 hrs

Roll No:.....

General Instructions

1. All the questions are compulsory
2. Answer all questions in a separate paper

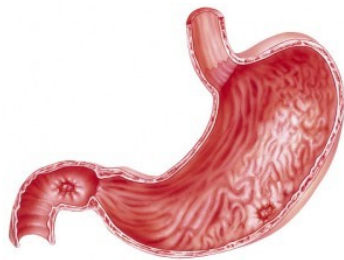
- Q.I Choose the correct answer :** **5 X ½ = 2 ½**
- a) Use of CNG in buses reduced pollution in  
a) Goa b) Kerala c) Delhi d) Chennai
  - b) An igneous rock among the following is  
a) Conglomerate b) Limestone c) Shale d) Pumice
  - c) When we blow out air over the surface of a mirror the image gets blurred because of \_\_\_\_\_ in the air we breathe out.  
a) Carbon dioxide b) Water vapour c) Nitrogen d) Dust particles
  - d) The instant energy source is  
a) Carbohydrate b) Oxygen c) Starch d) Glucose
  - e) The ore of Iron is  
a) Pyrites b) Haematite c) Calamine d) Bauxite
- Q.II Match the following:** **5 X ½ = 2 ½**
- a) Charminar - 1) Bijapur
  - b) Taj Mahal - 2) Eradication of Plague
  - c) Hawa mahal - 3) Iron pillar
  - d) Meenakshi Temple - 4) Mumtaz Mahal
  - e) Gol Gumbaz - 5) Madurai
  - 6) Jaipur
- Q.III Explain the following in one or two sentences:** **5x 1= 5**
- a) Mileage.
  - b) Vaccination.
  - c) Step farming.
  - d) Ore
  - e) Malnutrition.
- Q.IV Give Reason:** **5x 1= 5**
- a) We should use renewable or alternative energy sources.
  - b) When we blow into a hot object it cools down fast.
  - c) We should wear long sleeved night dress.
  - d) Sacred groves help in forest conservation.
  - e) Rocks are valuable natural resource.

Q. V

Identify the pictures and answer the questions based on it :

5 x 1= 5

a)



- i) Identify the organ.
- ii) What is its function?

b)



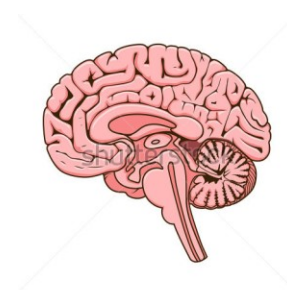
- i) Identify the personality.
- ii) How is she famous ?

c)



- i) Identify the picture.
- ii) Why is it made?

d)



- i) Identify the picture.
- ii) What is its function?

e)



- i) Identify the tribe.
- ii) Name the Indian state in which they live.

Q. VI

Complete the following by writing the missing parts :

4 x 1 ½ =6

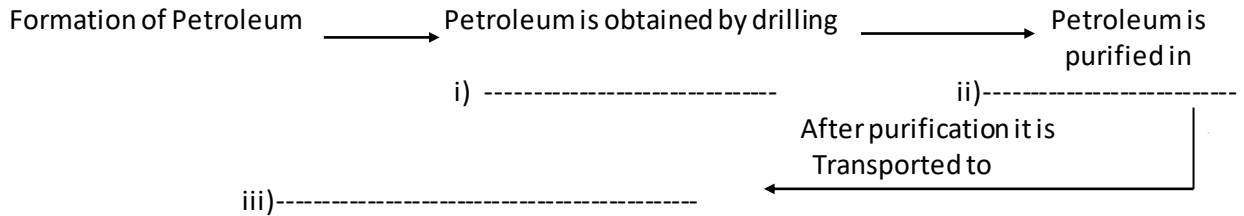
a)

Disease	Reason	Method of spreading
Typhoid	i) -----	Infected food and water.
Breathing problem	ii)-----	Do not spread
Diabetes	Lack of insulin	iii) -----

b)

Disease	Lack of nutrient	Symptom
i)-----	Protein	Swollen abdomen
Beri beri	ii)-----	Dry skin
Goitre	Iodine	iii)-----

c)



d)

Type of rock	Formed from	Example
Igneous	Magma inside the surface of earth.	i)-----
Sedimentary	ii)-----	Conglomerate
Metamorphic	Changing of granite	iii)-----

**VII**

**Answer the following questions in 2-3 sentences :**

**4 x 2 = 8**

- How is soil formed? Name the agents of soil erosion.
- Explain the different steps in formation of coal.
- What are the components of a balanced diet? What is its importance ?
- What are artificial satellites? Name the different types of artificial satellites .

**VIII**

**Answer the following questions in 4-5 sentences :**

**4 x 3 = 12**

- What are sedimentary rocks? How are they formed? Give two examples.
- Differentiate between communicable non-communicable diseases. Give one example for each.
- Explain any 3 methods to conserve soil.
- Monuments are our rich heritage. Who takes care of our monuments? List any four measures to protect our monuments.

**IX**

**Do as directed :**

**1 x 4 = 4**

- Draw and label the life cycle of mosquito.