



INDIAN SCHOOL DARSAIT DEPARTMENT OF BIOLOGY

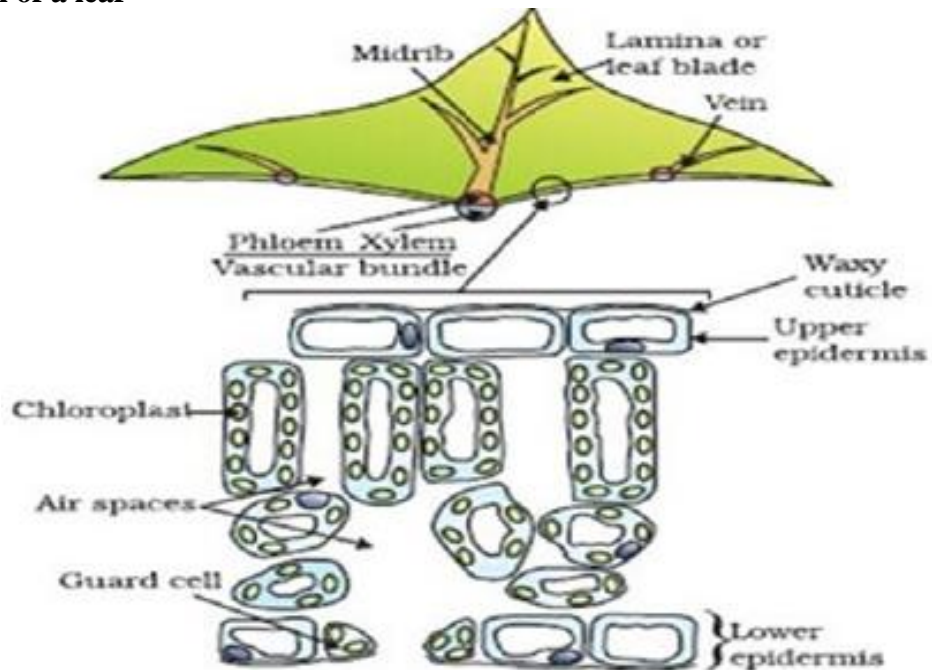


Subject : Biology	Topic : Diagram worksheet for Biology	Date of worksheet : 10/09/2017
Resource Person: Zehra Fatima		Date of submission : _____
Name of the Student : _____	Class & Division : X__	Roll Number : __

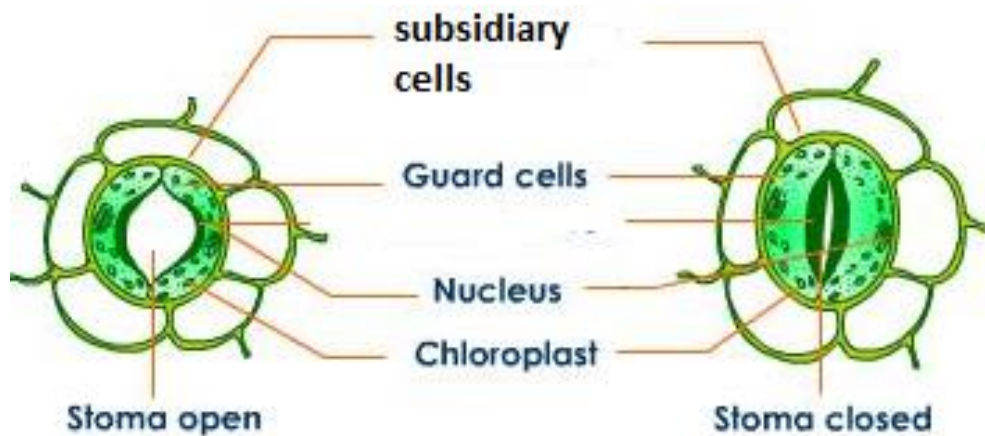
Important Diagrams (Draw and practice the following diagrams with labelling)

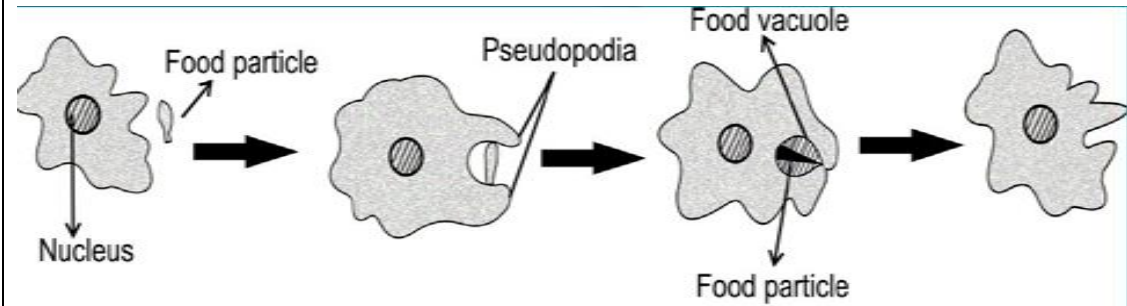
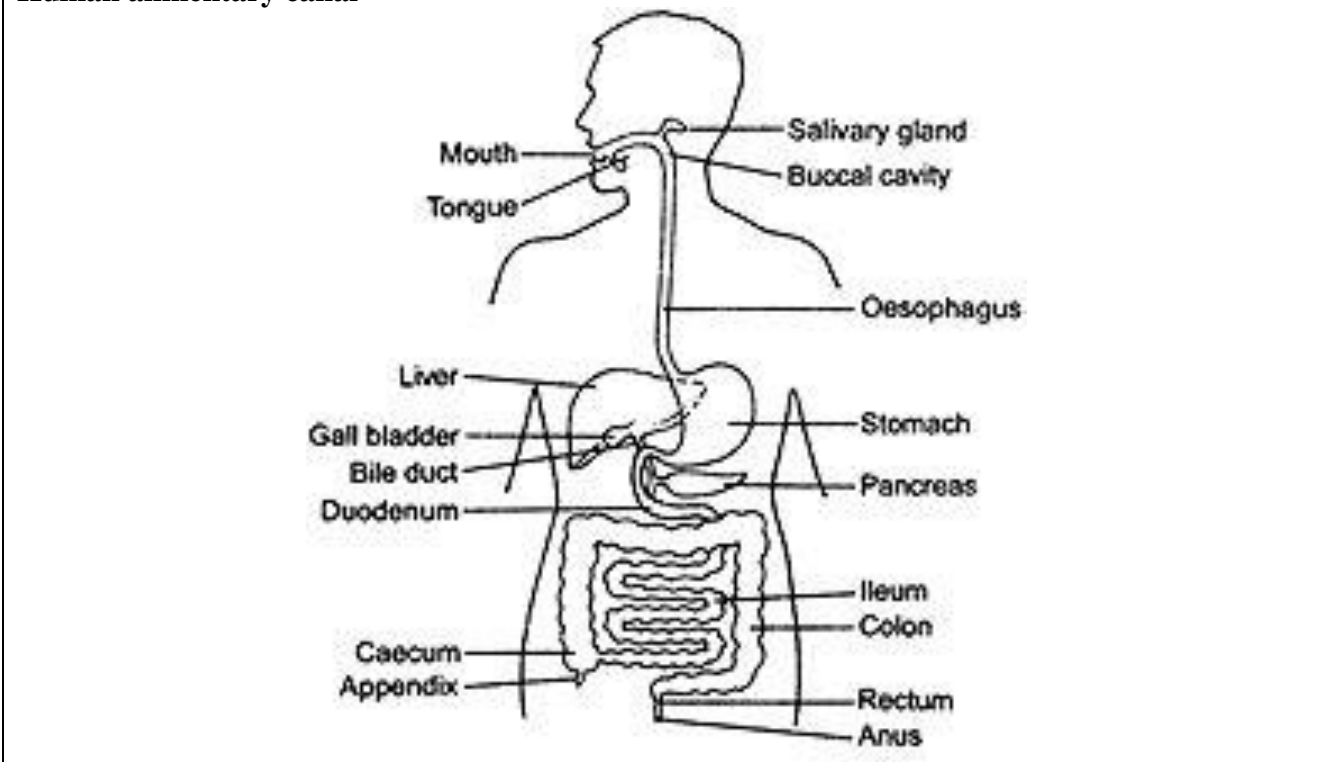
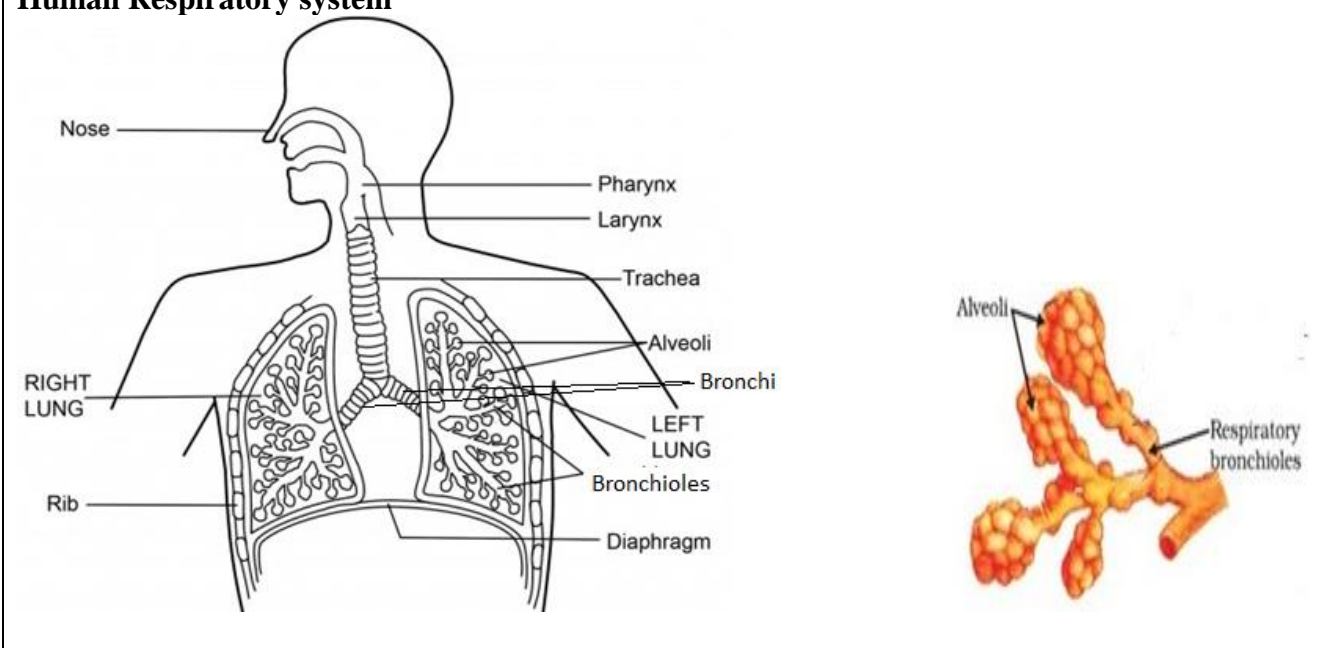
Life Processes

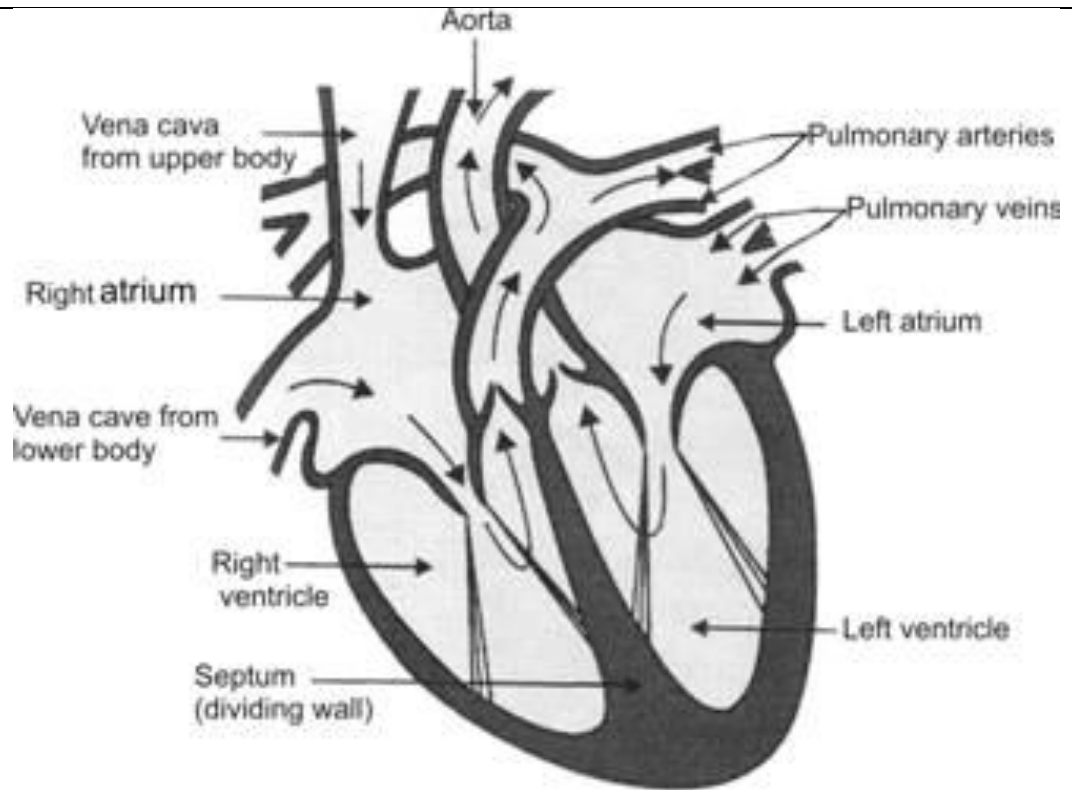
1. Cross-section of a leaf



2. Opening and Closing of Stomata

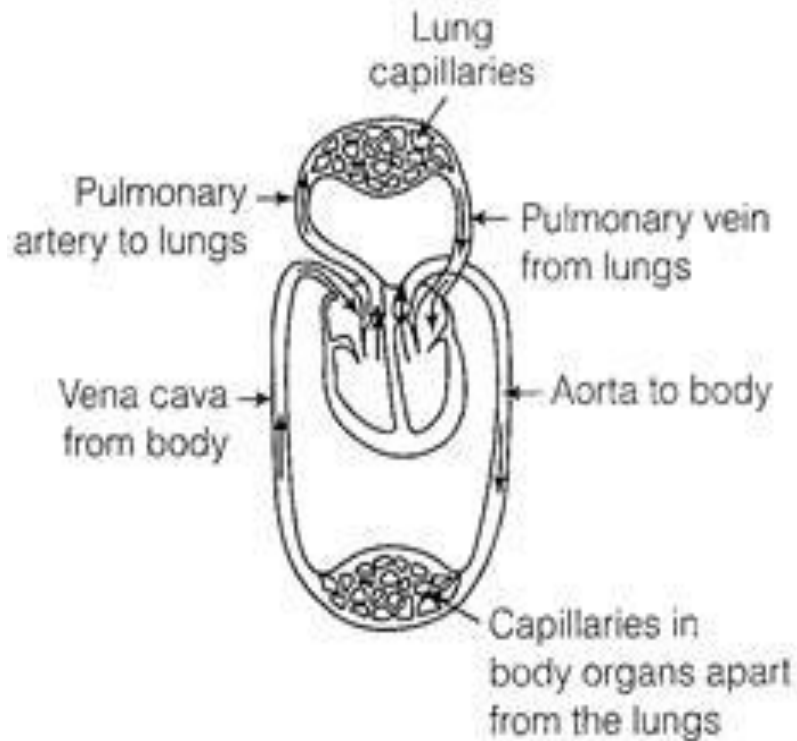


3.	<p>Nutrition in Amoeba</p> 
4.	<p>Human alimentary canal</p> 
5.	<p>Human Respiratory system</p> 
6.	<p>Human Heart</p>

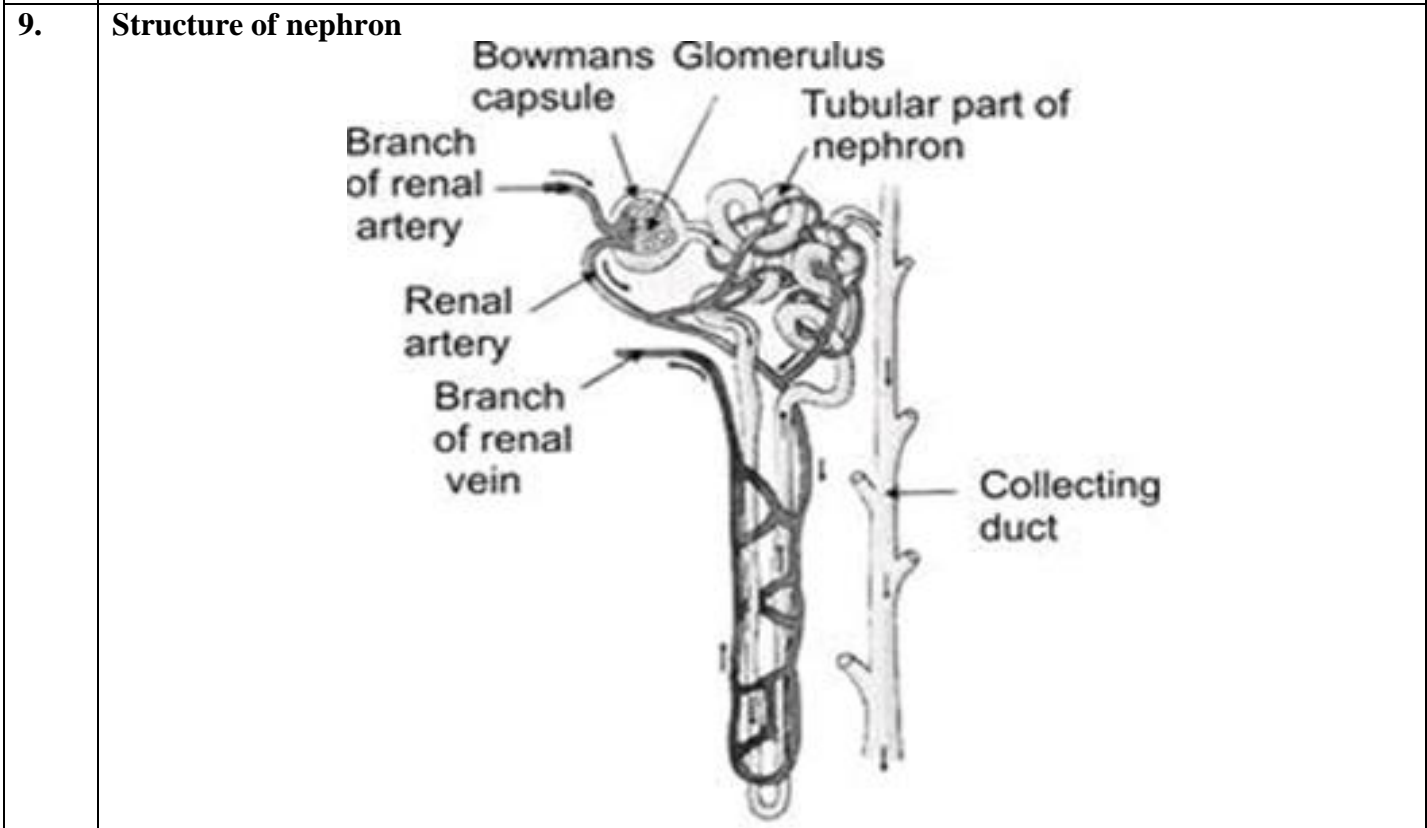
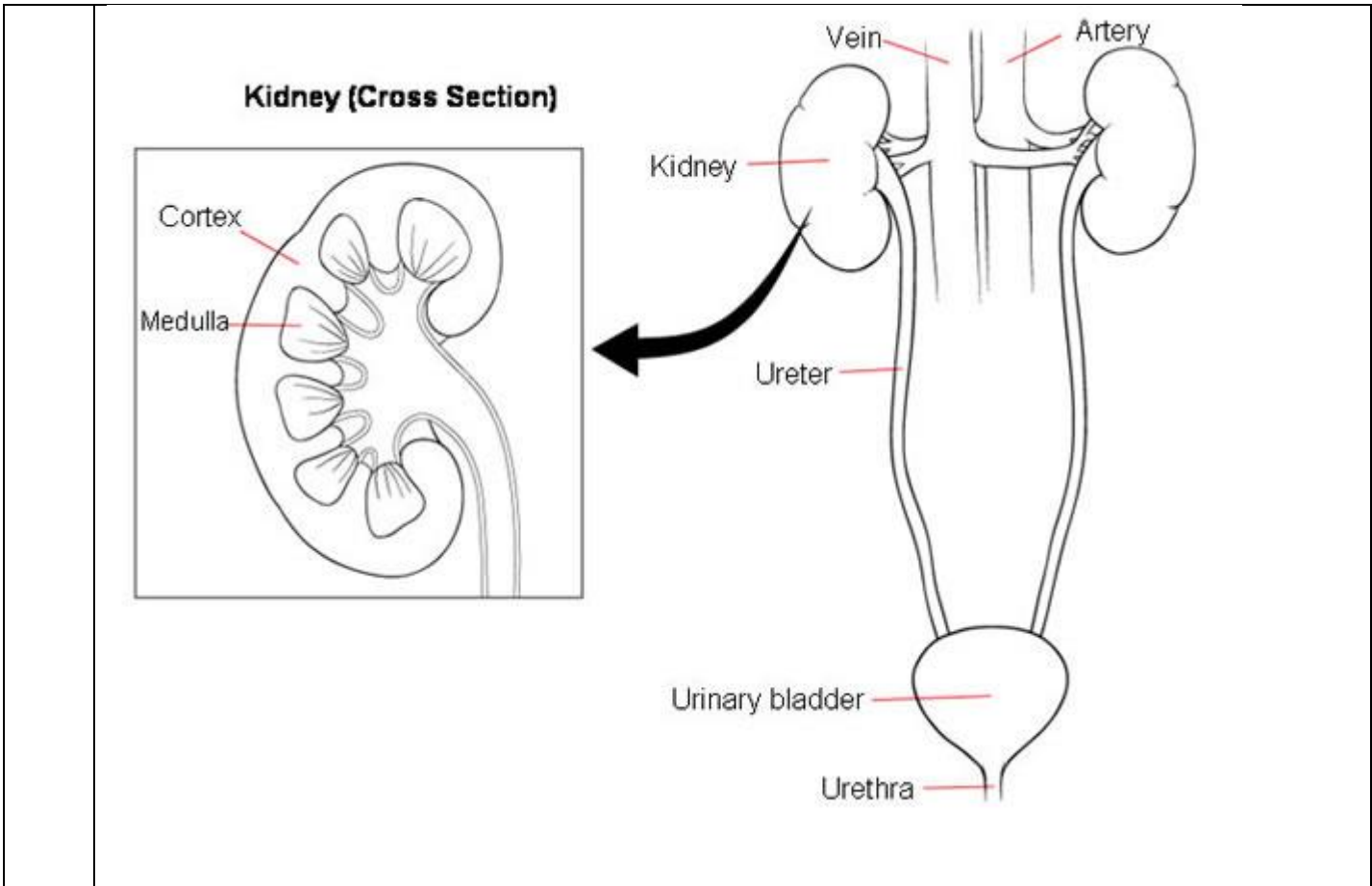


(Sectional view of the human heart)

7. Schematic representation of transport and exchange of oxygen and carbondioxide

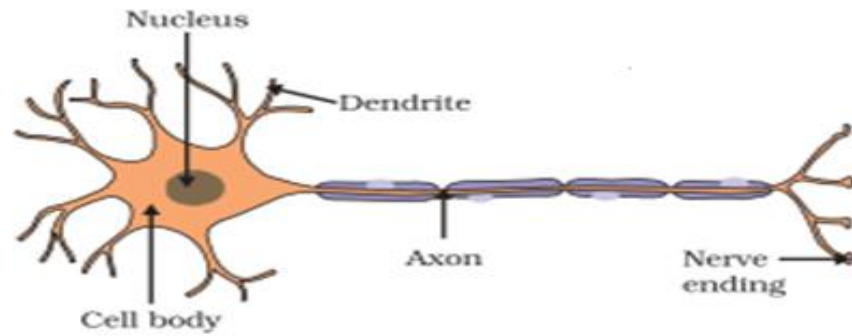


8. Excretory system of human beings

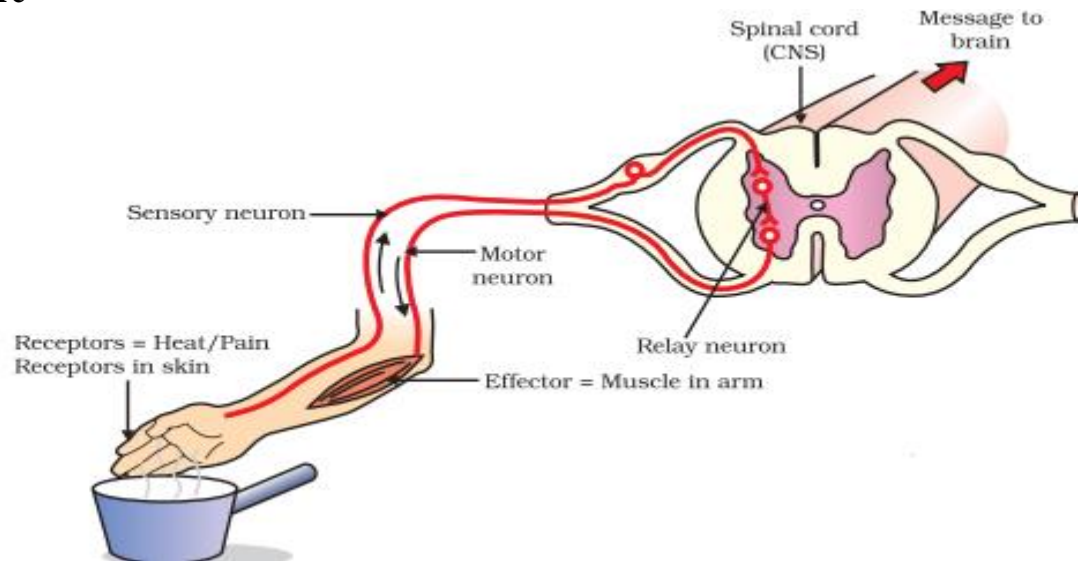


Control and Coordination

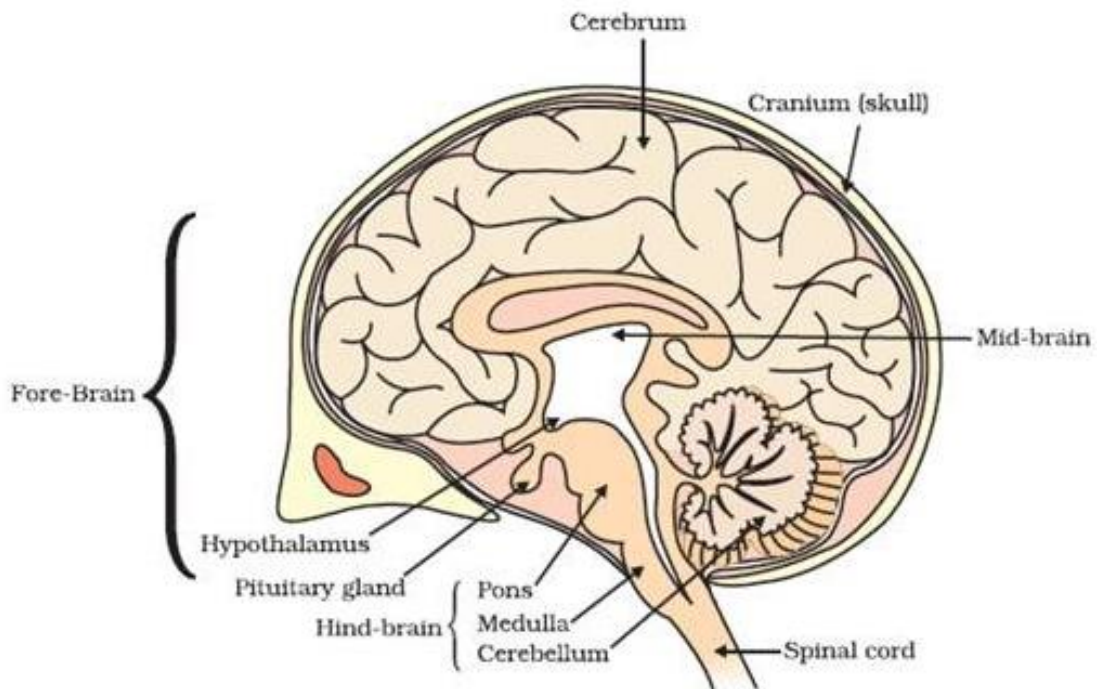
10. **Structure of Neuron**



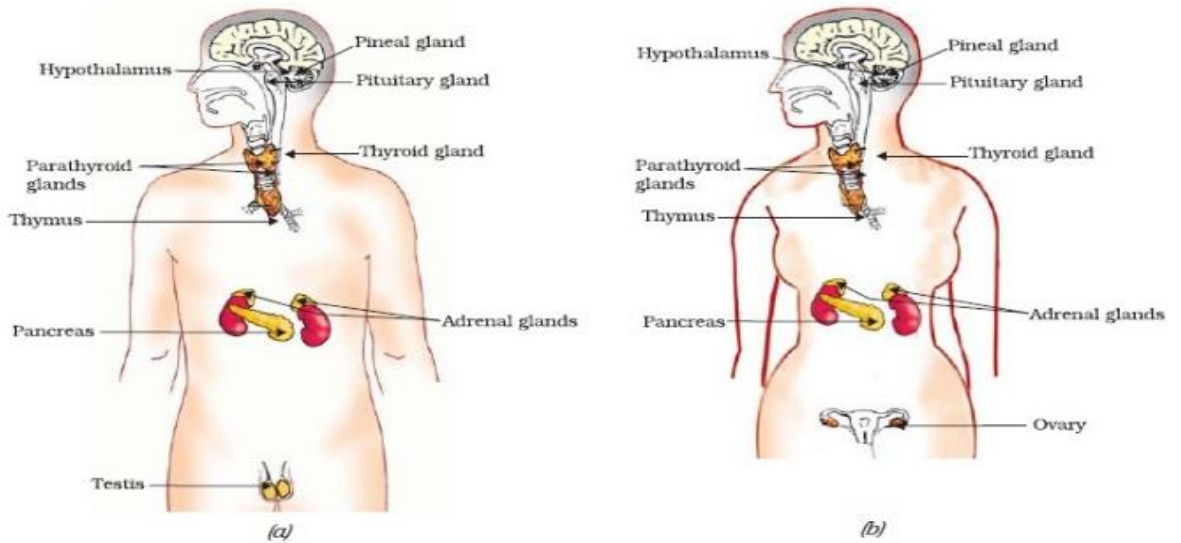
11. Reflex Arc



12. Human Brain

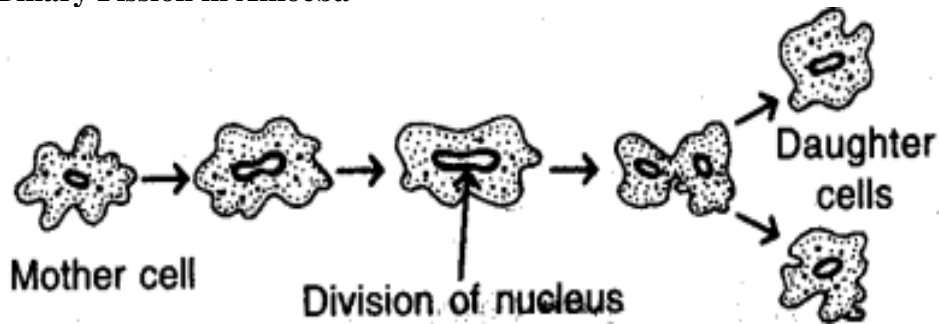


13. Endocrine glands in human beings
 a) Male b) Female

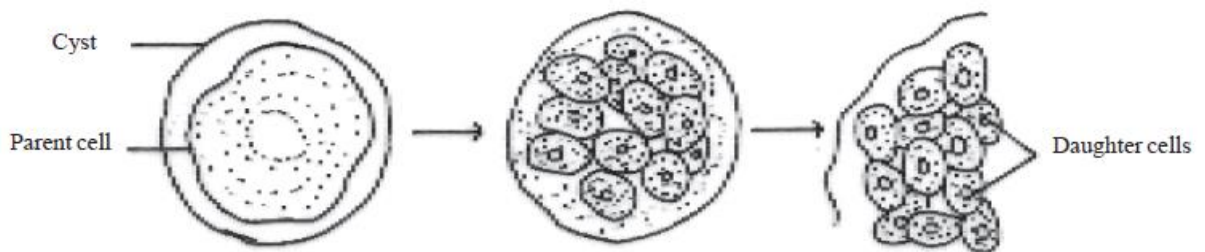


How Do Organisms Reproduce

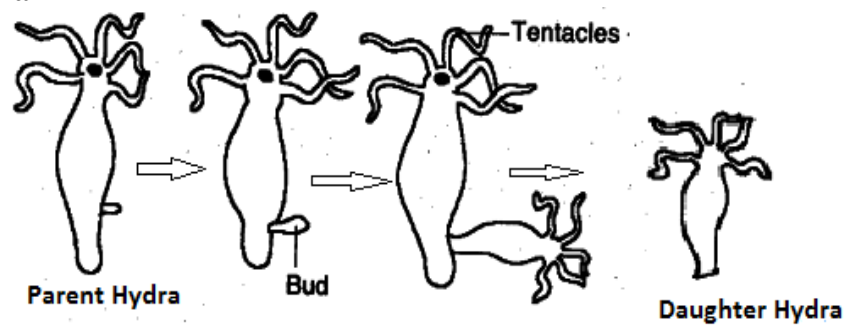
14. **Binary Fission in Amoeba**



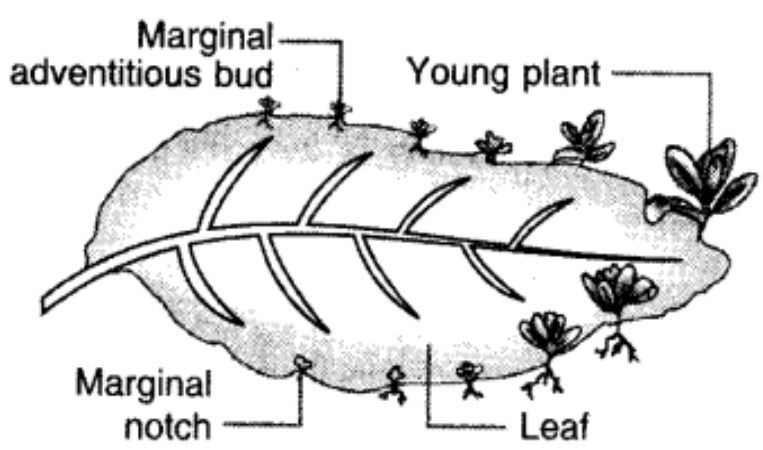
15. **Multiple Fission in Plasmodium**



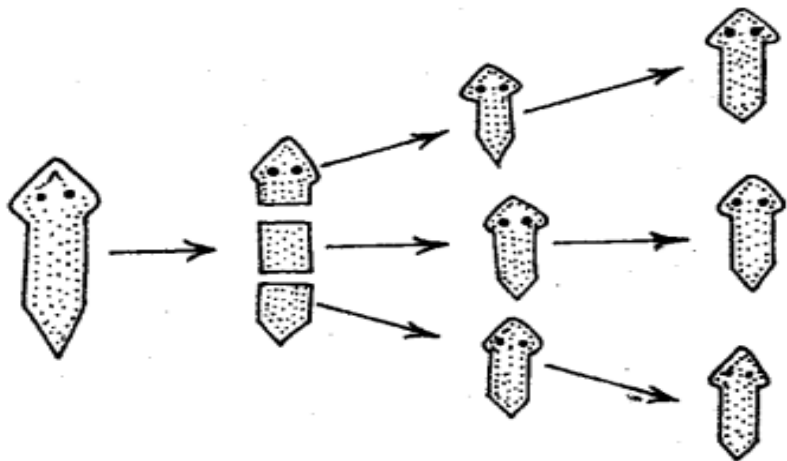
16. **Budding in Hydra**



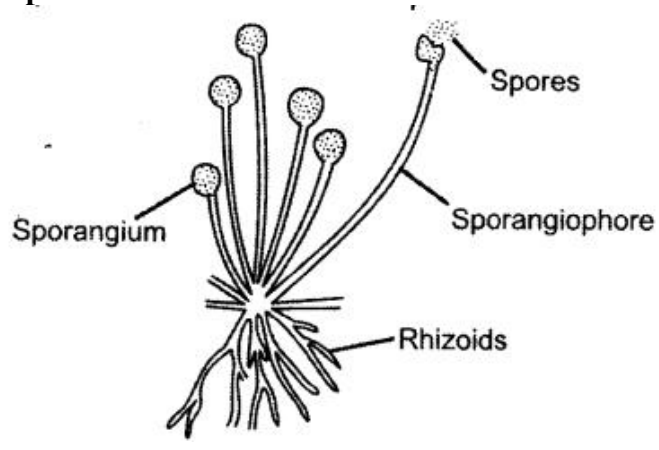
17. Vegetative propagation in Bryophyllum

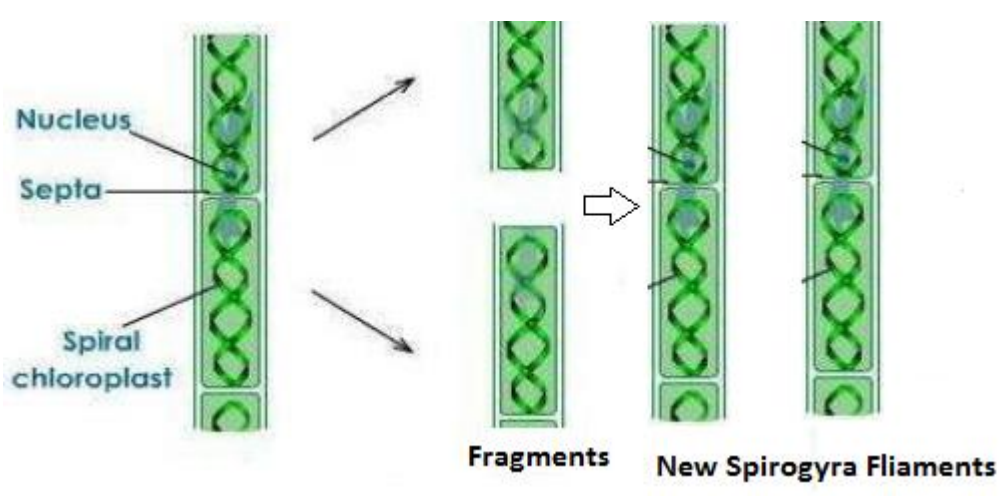
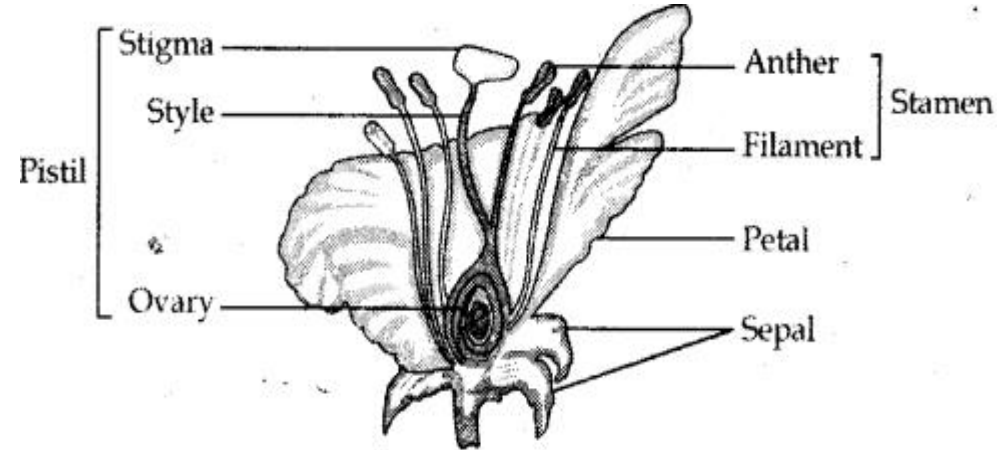
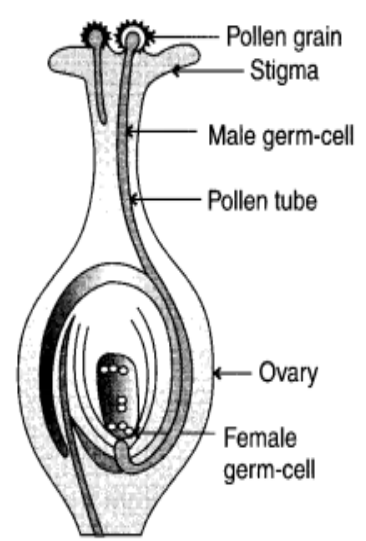


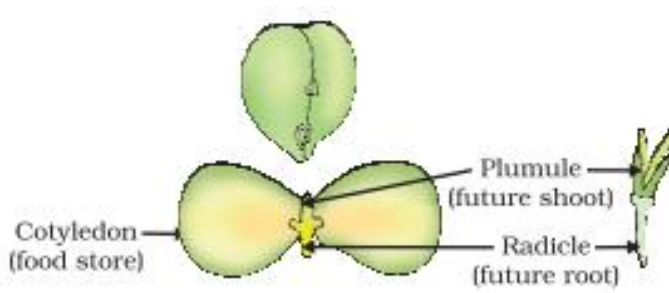
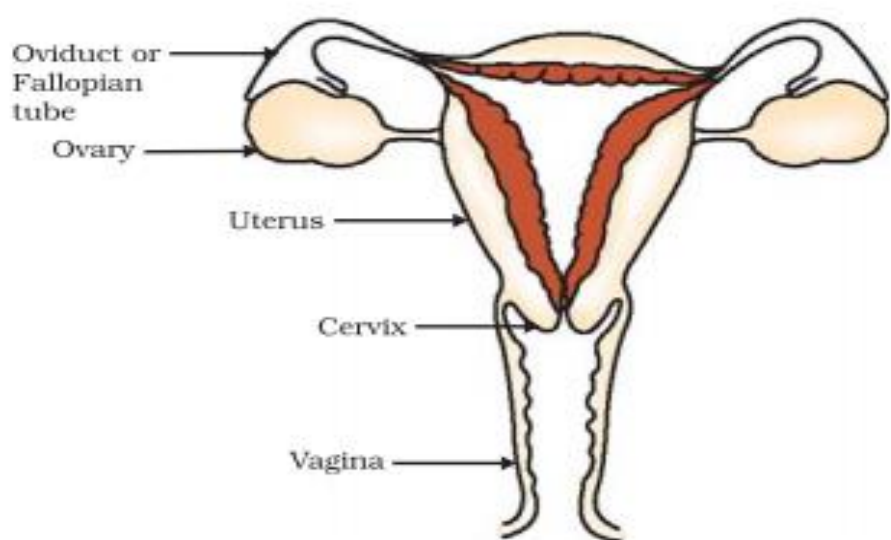
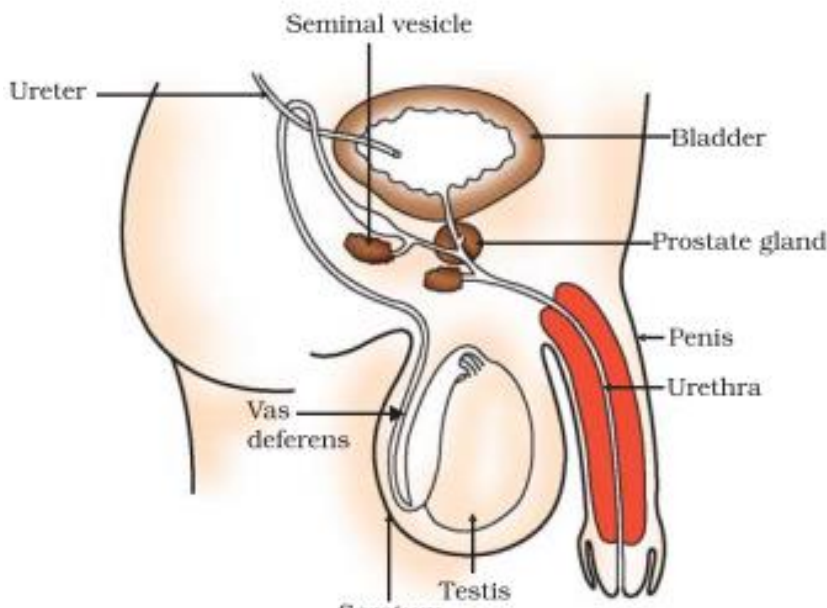
18. Regeneration in Planaria



19. Spore Formation in Rhizopus



20.	<p>Fragmentation in Spirogyra</p> 
21.	<p>Longitudinal section of a flower</p> 
22.	<p>Germination of pollen on stigma</p> 

23.	<p>Germination</p>  <p>The diagram illustrates the early stages of seed germination. It shows a seed with two large, green cotyledons (labeled 'Cotyledon (food store)'). From the center of the cotyledons, a small shoot (labeled 'Plumule (future shoot)') and a root (labeled 'Radicle (future root)') are beginning to emerge.</p>
24.	<p>Human –Female reproductive system</p>  <p>This diagram shows the internal female reproductive system. The central organ is the pear-shaped uterus, which is connected to two fallopian tubes (labeled 'Oviduct or Fallopian tube') that lead to the ovaries (labeled 'Ovary'). The lower part of the uterus is the cervix, which leads into the vagina.</p>
25.	<p>Human –Male reproductive system</p>  <p>This diagram illustrates the male reproductive system in relation to the urinary system. The bladder is shown with the seminal vesicle and prostate gland situated below it. The vas deferens (labeled 'Vas deferens') carries sperm from the testis (located in the scrotum) up to the ureter. The ureter carries urine from the bladder. The urethra (labeled 'Urethra') carries both urine and sperm through the penis.</p>